

***Demographics and Youth**

The state of the youth



Drugs, prisons and accidents

Less than BA

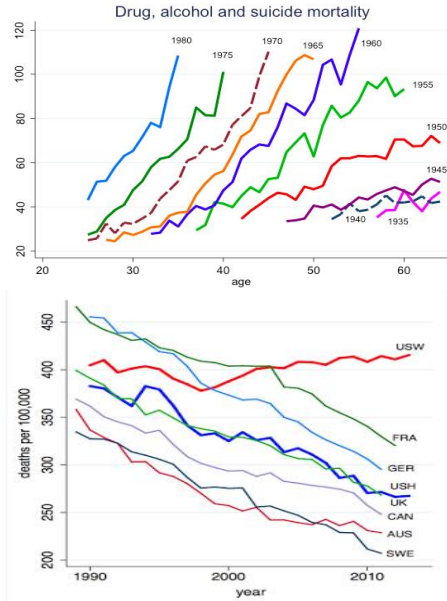
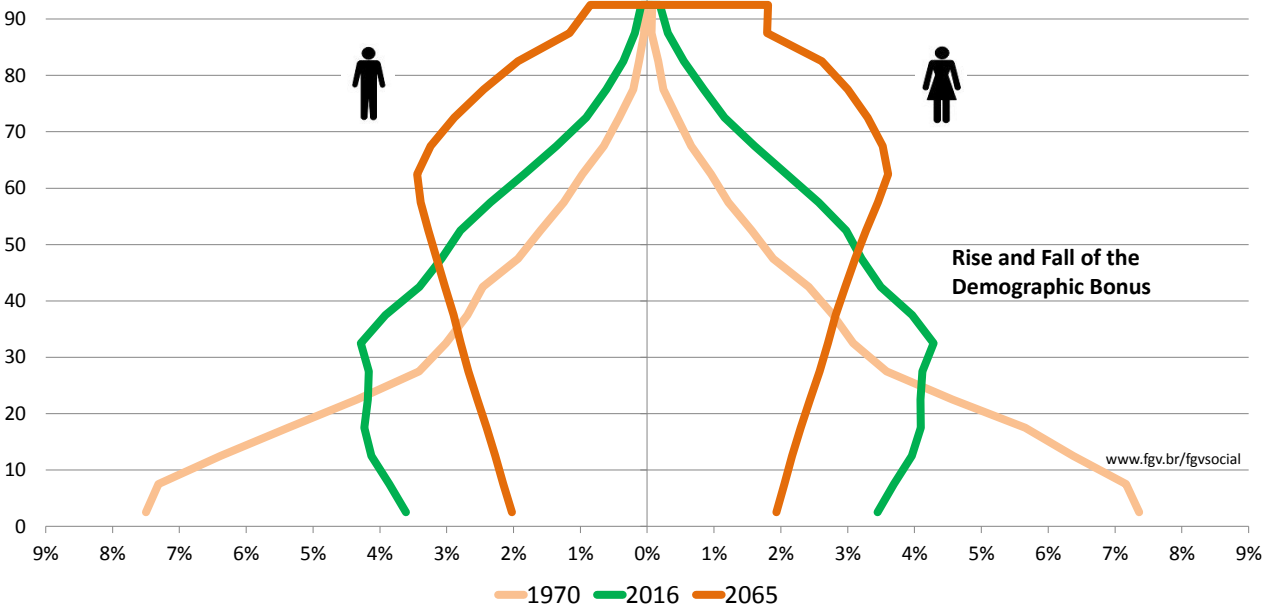


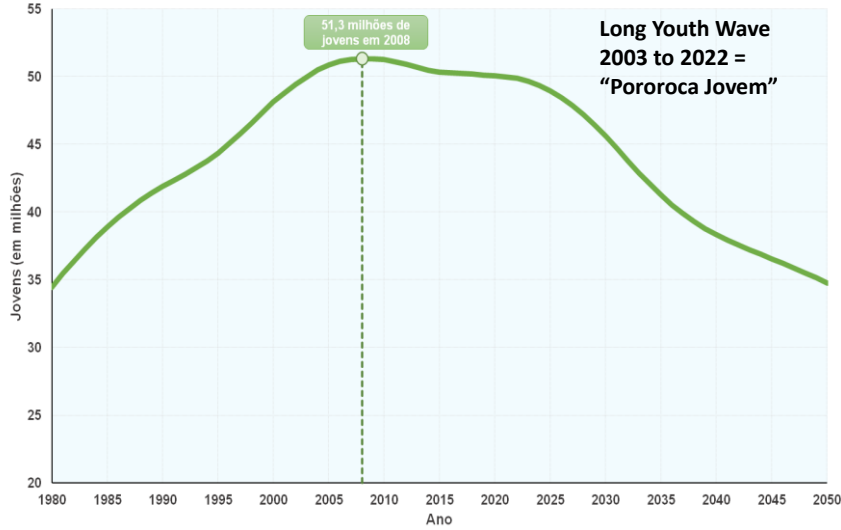
Fig. 1. All-cause mortality, ages 45-54 for US White non-Hispanics (USW), US Hispanics (USH), and six comparison countries: France (FRA), Germany (GER), the United Kingdom (UK), Canada (CAN), Australia (AUS), and Sweden (SWE).

DIRECTIONS: DEMOGRAPHIC EVOLUTION – BRAZIL



YOUTH

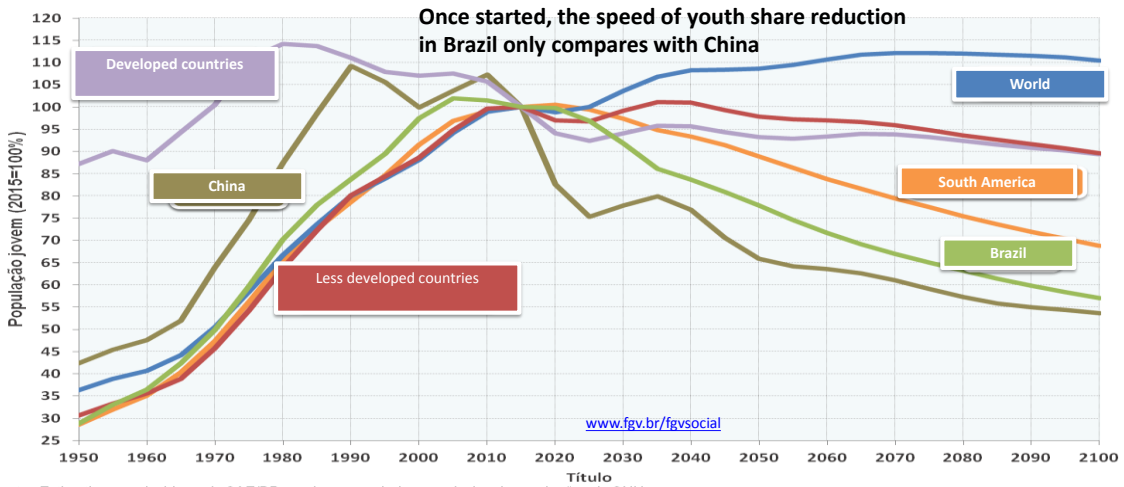
Evolution of the Youth Population from 15 to 29 years: Brazil - 1980 to 2050



Fonte: Estimativas produzidas pela SAE/PR com base nas projeções do IBGE

YOUTH

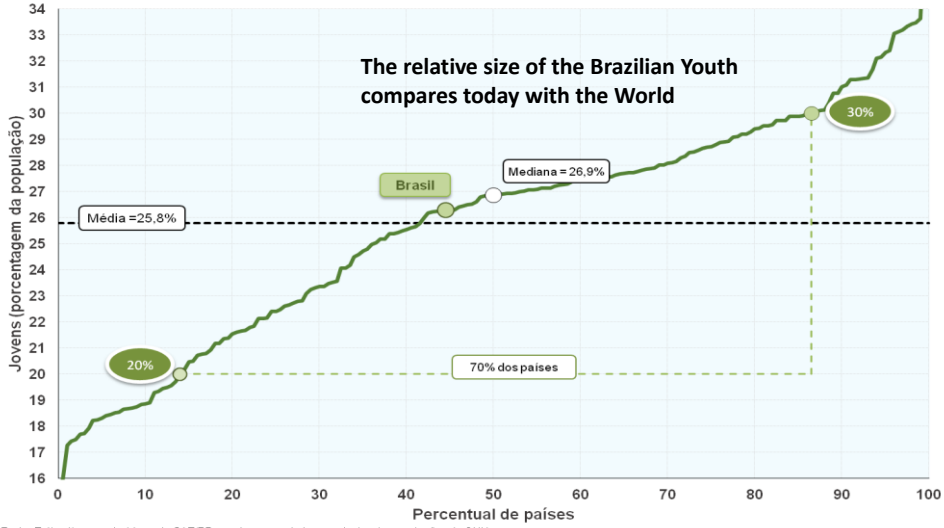
Temporal Evolution of the Share of Youth in the Population from 15 to 29 years: World - 1950 to 2100



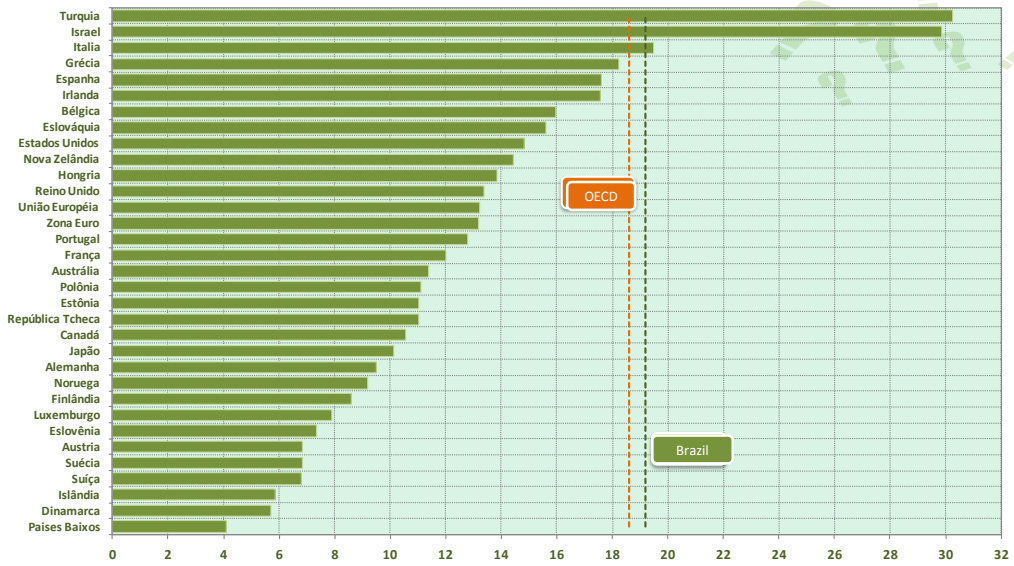
Fonte: Estimativas produzidas pela SAE/PR com base nos dados populacionais e projeções da ONU

YOUTH

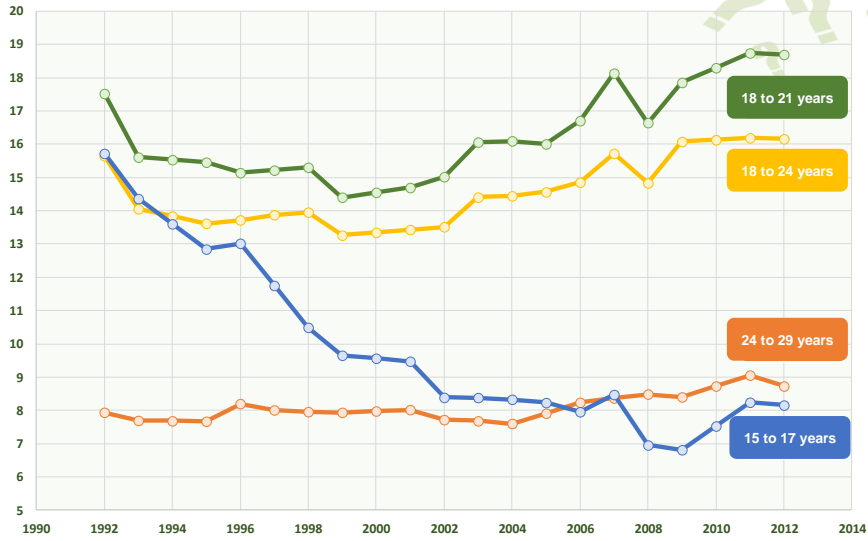
**Share of Youth Population from 15 to 29 years:
Brazil and the World: 2010**



Share of the Youth that neither work nor study (15 a 24 years) - Brazil and developed countries

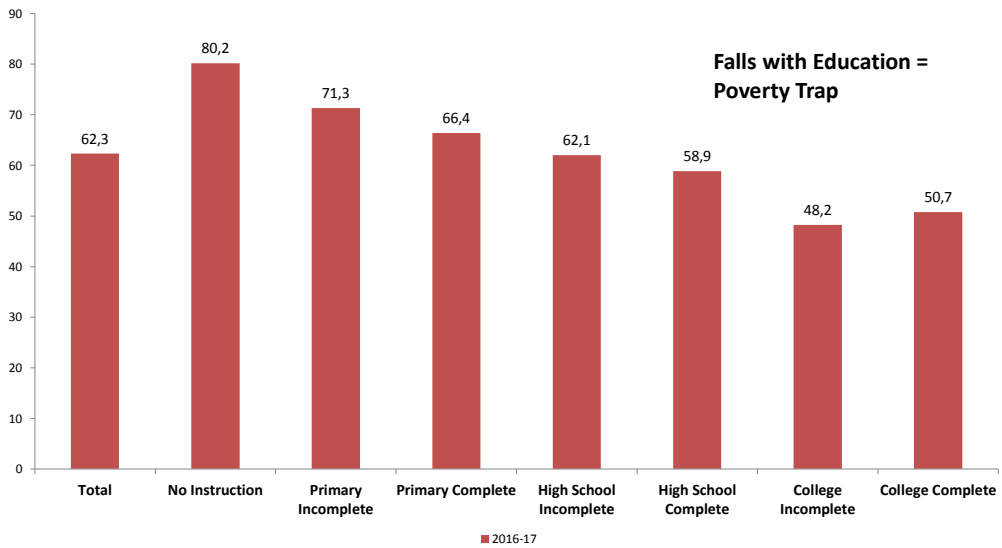


Evolution of the percentage of the youth that neither work, nor study, or are parents, by age group: What happened to 18-21 years olds?

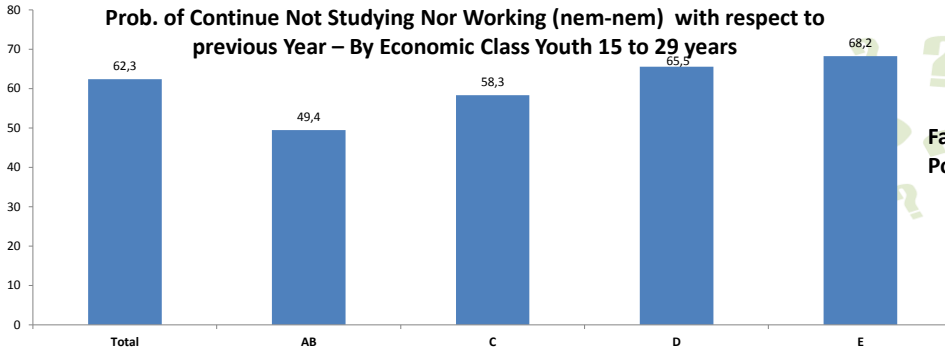


Source: SAE/PR based on the Pesquisa Nacional por Amostra de Domicílios (PNAD).

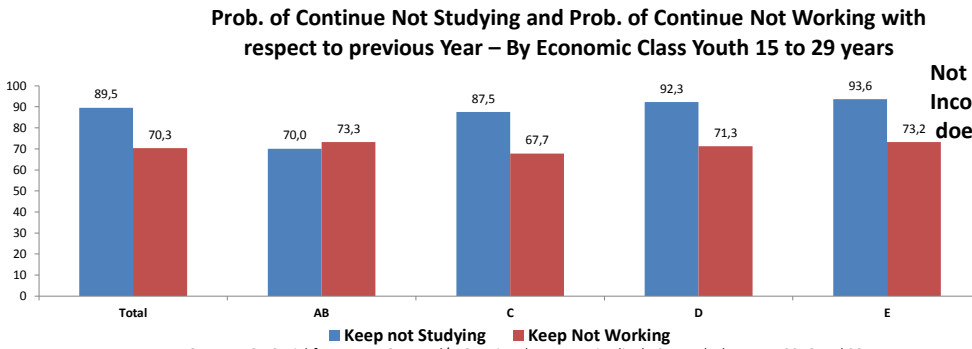
Prob. of Continue Not Studying Nor Working (nem-nem*) with respect to the previous Year – By Initial Schooling Level - Youth 15 to 29 years



Source: FGV Social from PNADC Annual/IBGE microdata – Longitudinal 12 months between 2016 and 2017



?????
Falls with Family Income = Poverty Trap



Not Studying falls with Income but not working doesn't

Source: FGV Social from PNADC Annual/IBGE microdata – Longitudinal 12 months between 2016 and 2017

HIGH TURN-OVER RATE

THE CONCEPT OF CIRCULATION

6 years

2 years

MEAN TIME ON CURRENT JOB

PERCENTAGE THAT ASK FOR DISMISSAL, OF ALL THE DISMISSALS

77%

28%

Between 18 and 24 years

Between 30 and 64 years

DISSATISFACTION OR EXPERIMENTATION?

34%

26%

YOUNG

ADULT

Source: 1. SAE/PR based on the *Cadastro Geral de Empregados e Desempregados (CAGED)*, 2013.
2. SAE/PR base on the *Pesquisa Nacional por Amostra de Domicílios (PNAD)*, 2012.